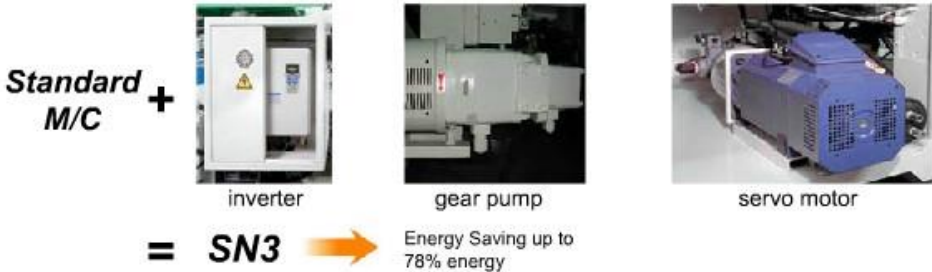


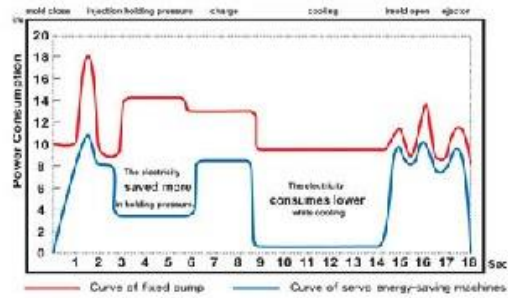
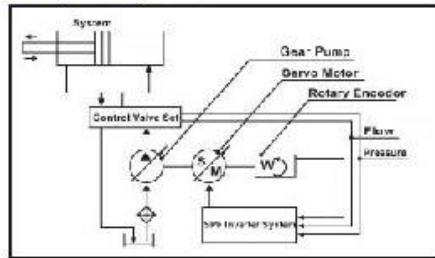
MAQUINAS INYECTORAS TAIMEX

SERIE TEN/SN3

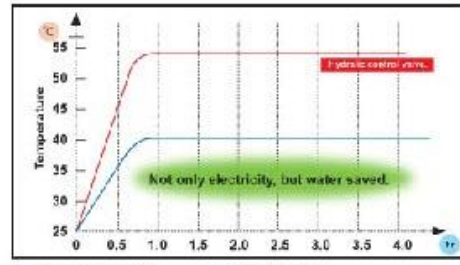
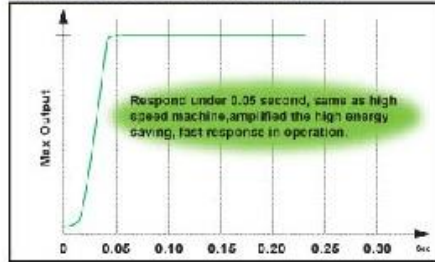
Híbridas Ahorradora de Energía



SN3 hydraulic system



Quick response of servo motor system



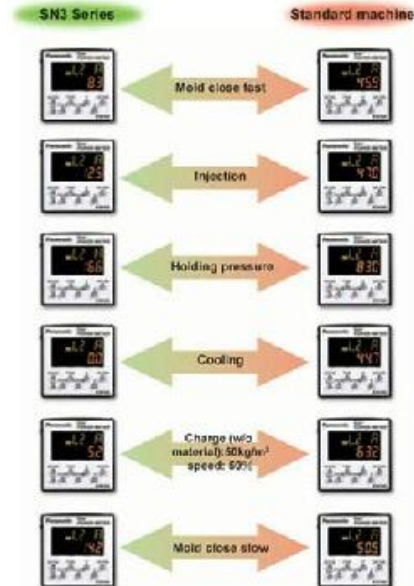
— standard machines — SN3 machines
Using the for 1 machine while all temperature stable and reduce the need for cooling water.

Variable pump+High Injection

SN2-550ACC2



SN2-550ACC2 :
Using our SN2 + Accumulator will Save energy 38%, product weight reduce save cost to 8%~12%, Speed increasing 12% (Verified according product & mold). Using SN2 variable pump, energy saving at 50%.



Servo motor + High injection + Gear pump + Inverter + Logical Loop.

SN3-350ACC



SN3-350ACC :
Using our SN3 + Accumulator will save energy 48%, product weight reduce save cost to 8%, Speed increasing 10% (Verified according product & mold). Using SN3, energy saving at 78%.